

Standard Tech Spec Import Interface Guide

Version 24.x

Last Modified 24.0 | March 2024

Overview

This standard interface is a one-way, inbound interface that allows you to upload mass quantities of Tech spec data in several file formats, including XML, Fixed Length and Delimited formats.

Please note, the interface is intended for uploading new data rather than updating or disabling any existing data.

The interface uses standard M5 scheduling and reject processing functionality by using the Interface Manager and Interface Reject Manager frames respectively.

Considerations:

- Interface must be enabled on the Interface and Screen Names frame.
- System Flag 5268 (Use Tech Spec Templates) must be set to N.
- System Flag 5289 (Warn/Force Entry of Not-Null, Positive Fuel Economy Estimate on Tech Spec) will only have an effect if the value is set to F.
- System Flag 5174 (Category Required?) will only have an effect if the value is set to Y.

Interface and Screen Names

To run the interface, you must make sure the interface is enabled for use.

SAVE UNDO REFRESH DELETE FIND

Interface and Screen Names

Search Criteria

Display Name: Template: Disabled:

Clear Retrieve

Interface Names (Loaded 595 records)

Interface Name	Display Name	Template	Disabled
M5-STD-TECHSPEC-IMPORT	Standard Tech Spec Import	StdTechSpecImport.XML	<input checked="" type="checkbox"/>

To verify:

1. Navigate to the Interface and Screen Names frame.
2. Scroll the list until you find **M5-STD-TECHSPEC-IMPORT** on the list.
3. Make sure the **Disabled** checkbox is cleared.
4. If it is selected and you want to run the interface, clear the checkbox and select **SAVE**.

Interface Manager

After verifying that the interface is enabled for use, navigate to the Interface Manager frame. To locate the interface, select the dropdown menu to select it from the list or enter to find it quicker.

SAVE

UNDO

REFRESH

DELETE

FIND

Interface Manager

Interface:

× 🔍

[Standard Tech Spec Import](#)

Number	Description	Value
--------	-------------	-------

Refresh

Current Execution Schedule (Loaded 0 records)

ID	Description	Status	Schedule Date	Last Run	Frequency	Exclude Holidays	Submitted By	Run Desc
----	-------------	--------	---------------	----------	-----------	------------------	--------------	----------

Interface Parameters

SAVE UNDO REFRESH DELETE FIND

Interface Manager

Interface:

Standard Part Upload Interface



Interface Parameters (Record 6 of 6)





Number	Description	Value
1	INPUT FILE PATH	C:\M5\INTERFACEFILES\STDPART\IN
2	OUTPUT FILE PATH	C:\M5\INTERFACEFILES\STDPART\OUT
3	EMAIL TO	PARTSROOM@ASSETWORKS.COM
4	EMAIL FROM	INTERFACE@ASSETWORKS.COM
5	DEFAULT LOCATION	PMC
6	FILE TYPE (EXTENSION)	

Refresh

- The most recent set of saved parameters will load when the i-frame loads. Unlike some interface frames, you are not able to save different sets of parameters.
- To change any of the six values, enter in the new information and select **SAVE**.

Interface Parameter Explanations

Parameter Name	Description	Required (Y/N)
INPUT FILE PATH	<p>File path where the input file will be found. Note: This path refers to the C: drive on the batch server.</p> <p> The directory name should not end with a "\", and can either be a mapped drive (C:, Q:, etc.) or with a \\server name\share\directory format.</p>	Y
OUTPUT FILE PATH	<p>File path where the file will be moved upon completion of the interface. Note: This path refers to the C: drive on the batch server.</p> <p> The directory name should not end with a "\", and can either be a mapped drive (C:, Q:, etc.) or with a \\server name\share\directory format.</p>	Y

Parameter Name	Description	Required (Y/N)
FILE PREFIX	<p>This must have a value and may either contain the starting portion of the file name and a wild card, or the * wild card character and file extension for the input file found in the INPUT FILE PATH folder.</p> <p> le *.CSV will process all files with an extension of .CSV. This would be paired with the FILE TYPE (below) of C.</p> <p> STD*.CSV will process any file starting with STD and ending with the extension .CSV</p> <p> STDTECH* would process all files starting with "STDTECH" and any extension.</p> <p> STDTECH.XML would process the file called STDTECH.XML in the INPUT FILE PATH folder. This would be paired with FILE TYPE X for XML formatted files.</p>	Y
EMAIL TO	User to whom an email updates will be sent upon about the interface run.	Y
EMAIL FROM	User from whom the email originates. Defaults to: Interface@assetworks.com.	Y
FILE TYPE (C,F,P,S,T,X)	<p>Type of file format being used as input. The file will be preprocessed into an XML message which will be sent to the interface.</p> <ul style="list-style-type: none"> • C – Comma • F – Fixed • P – Pipe • S – Semicolon • T – Tab • X - XML 	Y



The interface creates a program log file useful in case of program failure. By default, it will be in the M5\Interface\Logs directory.

File Data

This interface is written to handle several file formats, including XML, Fixed Length and Delimited formats. Below is a description of each layout.

Delimited format files must contain a header record. This record will be ignored by the interface.

XML Format

Field Name	Tag	Max Length	Valid Values	M5 Column
YEAR	<YEAR>	5	Integer	TECH_SPEC.YEAR
CATEGORY	<CATEGORY>	13	Must be a valid M5 Category.	TECH_SPEC.CATEGORY
MAKE	<MAKE>	30	Must be a valid M5 Make for this Manufacturer.	TECH_SPEC.MAKE
MANUFACTURER	<MANUFACTURER>	30	Must be a valid M5 Manufacturer.	TECH_SPEC.MANUFACTURER
FUEL CLASS	<FUEL_CLASS>	20	Must be a valid M5 Static Code - code type = 'FUEL_CLASS'	TECH_SPEC.FUEL_CLASS
VEHICLE TYPE	<VEH_TYPE>	20	Must be a valid M5 Static Code - code type = 'VEH_TYPE'	TECH_SPEC.VEH_TYPE
MODEL	<MODEL>	30	Must be a valid Model for this Manufacturer /Make.	TECH_SPEC.MODEL
SPEC NUMBER	<SPEC_NO>	13	Must not already exist in TECH_SPEC	TECH_SPEC.SPEC_NO.
OFF HWY PERCENT	<OFF_HWY_PC>	5	Number with explicit floating decimal point between 0 and 100. For example, 1.234	TECH_SPEC.OFF_HYW_PC


Field Name	Tag	Max Length	Valid Values	M5 Column
REPLACEMENT PERCENT	<REPLACE_PC>	10	Number with explicit floating decimal point. For example, 1.235	TECH_SPEC.REPLACE_PC
DESCRIPTION	<DESCRIPTION>	100		TECH_SPEC.DESCRPTION
TRIM	<TRIM>	20		TECH_SPEC.TRIM
REFERENCE	<REFERENCE>	20		TECH_SPEC.REFERENCE
GVW	<GVW>	10		TECH_SPEC.GVW
FUEL ECONOMY CITY	<UPQ_CITY>	10		TECH_SPEC.UPQ_CITY
FUEL ECONOMY HIGHWAY	<UPQ_HIGHWAY>	10		TECH_SPEC.UPQ_HIGHWAY
FUEL ECONOMY COMBINED	<UPQ_COMBINED>	10		TECH_SPEC.UPQ_COMBINED
NOTES	<NOTES>	4000		TECH_SPEC.NOTES
SPEC WO NOTES	<SPEC_WO_NOTES>	4000		TECH_SPEC.SPEC_WO_NOTES

Fixed Format

Field Name	Start Position	Length	Valid Values	M5 Column
SPEC NUMBER	1	13	Must not already exist in TECH_SPEC.	TECH_SPEC.SPEC_NO.
DESCRIPTION	14	100		TECH_SPEC.DESCRPTION
YEAR	114	5	Integer	TECH_SPEC.YEAR
MANUFACTURER	119	30	Must be a valid M5 Manufacturer.	TECH_SPEC.MANUFACTURER
MAKE	149	30	Must be a valid M5 Make for this Manufacturer.	TECH_SPEC.MAKE

Field Name	Start Position	Length	Valid Values	M5 Column
MODEL	179	30	Must be a valid Model for this Manufacturer /Make.	TECH_SPEC.MODEL
TRIM	209	20		TECH_SPEC.TRIM
REFERENCE	229	20		TECH_SPEC.REFERENCE
CATEGORY	249	13	Must be a valid M5 Category.	TECH_SPEC.CATEGORY
REPLACEMENT PERCENT	262	10	Number with explicit floating decimal point. For example, 1.235.	TECH_SPEC.REPLACE_PC
GVW	272	10		TECH_SPEC.GVW
OFF HWY PERCENT	282	5	Number with explicit floating decimal point between 0 and 100. For example, 1.234.	TECH_SPEC.OFF_HYW_PC
VEHICLE TYPE	287	20	Must be a valid M5 Static Code - code type = 'VEH_TYPE'	TECH_SPEC.VEH_TYPE
FUEL CLASS	307	20	Must be a valid M5 Static Code - cod type = 'FUEL_CLASS'	TECH_SPEC.FUEL_CLASS
FUEL ECONOMY CITY	327	10		TECH_SPEC.UPQ_CITY
FUEL ECONOMY HIGHWAY	337	10		TECH_SPEC.UPQ_HIGHWAY
FUEL ECONOMY COMBINED	347	10		TECH_SPEC.UPQ_COMBINED
NOTES	357	4000		TECH_SPEC.NOTES
SPEC WO NOTES	4357	4000		TECH_SPEC.SPEC_WO_NOTES

Delimited Format

 Header required.

Field Name	Max Length	Valid Values	M5 Column
CATEGORY	13	Must be a valid M5 Category.	TECH_SPEC.CATEGORY
DESCRIPTION	100		TECH_SPEC.DESCRPTION
FUEL CLASS	20	Must be a valid M5 Static Code - code type = 'FUEL_CLASS'	TECH_SPEC.FUEL_CLASS
FUEL ECONOMY CITY	10		TECH_SPEC.UPQ_CITY
FUEL ECONOMY COMBINED	10		TECH_SPEC.UPQ_COMBINED
FUEL ECONOMY HIGHWAY	10		TECH_SPEC.UPQ_HIGHWAY
GVW	10		TECH_SPEC.GVW
MAKE	30	Must be a valid M5 Make for this Manufacturer	TECH_SPEC.MAKE
MANUFACTURER	30	Must be a valid M5 Manufacturer	TECH_SPEC.MANUFACTURER
MODEL	30	Must be a valid Model for this Manufacturer/Make	TECH_SPEC.MODEL
NOTES	4000		TECH_SPEC.NOTES
OFF HWY PERCENT	5	Number with explicit floating decimal point between 0 and 100. For example, 1.234	TECH_SPEC.OFF_HYW_PC
REFERENCE	20		TECH_SPEC.REFERENCE
REPLACEMENT PERCENT	10	Number with explicit floating decimal point. For example, 1.235.	TECH_SPEC.REPLACE_PC
SPEC NUMBER	13	Must not already exists in TECH_SPEC	TECH_SPEC.SPEC_NO.
SPEC WO NOTES	4000		TECH_SPEC.SPEC_WO_NOTES
TRIM	20		TECH_SPEC.TRIM
VEHICLE TYPE	20	Must be a valid M5 Static Code - code type = 'VEH_TYPE'	TECH_SPEC.VEH_TYPE

Field Name	Max Length	Valid Values	M5 Column
YEAR	5	Integer	TECH_SPEC.YEAR

Sample Data

XML:

```
<TECHSPECS>
  <TECHSPEC>
    <SPEC_NO>32168596A4562</SPEC_NO>
    <DESCRIPTION>Test Description - 30 characters</DESCRIPTION>
    <YEAR>2015</YEAR>
    <MANUFACTURER>FORD</MANUFACTURER>
    <MAKE>E350</MAKE>
    <MODEL>VAN</MODEL>
    <TRIM>TEST</TRIM>
    <REFERENCE>TEST</REFERENCE>
    <CATEGORY>21</CATEGORY>
    <REPLACE_PC>8</REPLACE_PC>
    <GVW>2500</GVW>
    <OFF_HWY_PC>0</OFF_HWY_PC>
    <VEH_TYPE>PASS_CAR</VEH_TYPE>
    <FUEL_CLASS>MINIVAN 2WD</FUEL_CLASS>
    <UPQ_CITY>0</UPQ_CITY>
    <UPQ_HIGHWAY>0</UPQ_HIGHWAY>
    <UPQ_COMBINED>0</UPQ_COMBINED>
    <NOTES>TEST NOTES</NOTES>
    <SPEC_WO_NOTES>TEST NOTES</SPEC_WO_NOTES>
  </TECHSPEC>
  <TECHSPEC>
    <SPEC_NO>JOTECH1</SPEC_NO>
    <DESCRIPTION>JO DESCRIPTION</DESCRIPTION>
    <YEAR>2020</YEAR>
    <MANUFACTURER>GMC</MANUFACTURER>
    <MAKE>SIERRA</MAKE>
    <MODEL>1500</MODEL>
    <TRIM>TRIM-RED</TRIM>
    <REFERENCE>REFERENCE-0000</REFERENCE>
```

```
<CATEGORY>21</CATEGORY>
<REPLACE_PC>.3</REPLACE_PC>
<GVW>1500</GVW>
<OFF_HWY_PC>.5</OFF_HWY_PC>
<VEH_TYPE>PASS_CAR</VEH_TYPE>
<FUEL_CLASS>MINIVAN 4WD</FUEL_CLASS>
<UPQ_CITY>10.5</UPQ_CITY>
<UPQ_HIGHWAY>15.5</UPQ_HIGHWAY>
<UPQ_COMBINED>.6</UPQ_COMBINED>
<NOTES>TECH NOTES</NOTES>
<SPEC_WO_NOTES>WO NOTES</SPEC_WO_NOTES>
</TECHSPEC>
</TECHSPECS>
```

Fixed:

	A	B	C	D	E	F	G	H	I	J	K	L	M	N	O	P	Q	R	S	T
1	NUMBER	DESCRIPTION	YEAR	MANUFACT	MAKE	MODEL	TRIM	REFERENCE	CATEGORY	REPLCT	GVW	OFFRDUSE	VEHTYPE	FUELCLAS	FUELCTY	FUELHIGH	FUELCOMB	TSNOTES	TSWONOTES	
2	JOTECH11	JO DESCR	2020	GMC	SIERRA	4X4	TRIM-RED	REFERENCE	21	0.3	1500	0.5	PASS_CAR	MINIVAN 4WD	10.5	15.5		TECH NOT	"WO NOTES"	
3	JOTECH20	INVALID M	2020	GMC	SIERRASS	4X4	TRIM-RED	REFERENCE	21	0.3	1500	0.5	PASS_CAR	MINIVAN 4WD	10.5	15.5		TECH NOT	"WO NOTES"	
4	JOTECH19	INVALID M	2020	GMM	SIERRA	4X4	TRIM-RED	REFERENCE	21	0.3	1500	0.5	PASS_CAR	MINIVAN 4WD	10.5	15.5		TECH NOT	"WO NOTES"	
5	32168596	Test Descr	2015	FORD	E35	VAN	TEST	TEST	21	8	2500	0	PASS_CAR	MINIVAN 2WD	0	0	0	TEST NOT	"TEST NOTES"	
6	JOTECH2	JO DESCR	2020	GMC	SIERRA	4X4	TRIM-RED	REFERENCE	21	0.3	1500	0.5	PASS_CAR	MINIVAN 4WD	10.5	15.5		TECH NOT	"WO NOTES"	
7	JOTECH3	TRIM TOO	2020	GMC	SIERRA	4X4	TRIM1111	REFERENCE	21	0.3	1500	0.5	PASS_CAR	MINIVAN 4WD	10.5	15.5		TECH NOT	"WO NOTES"	
8	JOTECH4	REF TOO L	2020	GMC	SIERRA	4X4	TRIM-RED	REFERENCE	21	0.3	1500	0.5	PASS_CAR	MINIVAN 4WD	10.5	15.5		TECH NOT	"WO NOTES"	
9	JOTECH5	INVALID C	2020	GMC	SIERRA	4X4	TRIM-RED	REFERENCE 2X	21	0.3	1500	0.5	PASS_CAR	MINIVAN 4WD	10.5	15.5		TECH NOT	"WO NOTES"	
10	JOTECH6	INVALID R	2020	GMC	SIERRA	4X4	TRIM-RED	REFERENCE	21	.X	1500	0.5	PASS_CAR	MINIVAN 4WD	10.5	15.5		TECH NOT	"WO NOTES"	
11	JOTECH7	INVALID G	2020	GMC	SIERRA	4X4	TRIM-RED	REFERENCE	21	0.5	X	0.5	PASS_CAR	MINIVAN 4WD	10.5	15.5		TECH NOT	"WO NOTES"	
12	JOTECH81	INVALID H	2020	GMC	SIERRA	4X4	TRIM-RED	REFERENCE	21	0.3	1500	99.9999	PASS_CAR	MINIVAN 4WD	10.5	15.5		TECH NOT	"WO NOTES"	
13	JOTECH31	INVALID V	2020	GMC	SIERRA	4X4	TRIM-RED	REFERENCE	21	14	1500	0.5	PASS_CAR	MINIVAN 4WD	10.5	15.5		TECH NOT	"WO NOTES"	
14	JOTECH30	INVALID F	2020	GMC	SIERRA	4X4	TRIM-RED	REFERENCE	21	0.3	1500	0.5	PASS_CAR	MINIVAN 4WD	10.5	15.5		TECH NOT	"WO NOTES"	
15	JOTECH11	INVALID U	2020	GMC	SIERRA	4X4	TRIM-RED	REFERENCE	21	0.03	1500	0.5	PASS_CAR	MINIVAN 4WD	10.5	15.5		TECH NOT	"WO NOTES"	
16	JOTECH12	INVALID U	2020	GMC	SIERRA	4X4	TRIM-RED	REFERENCE	21	0.03	1500	0.5	PASS_CAR	MINIVAN 4WD	10.5	A		TECH NOT	"WO NOTES"	
17	JOTECH13	INVALID U	2020	GMC	SIERRA	4X4	TRIM-RED	REFERENCE	21	11	1500	0.5	PASS_CAR	MINIVAN 4WD	10.5	15.5	D	TECH NOT	"WO NOTES"	
18	JOTECH14	MISSING C	2020	GMC	SIERRA	4X4	TRIM-RED	REFERENCE	21	0.5	1500	0.5	PASS_CAR	MINIVAN 4WD	10.5	15.5		TECH NOT	"WO NOTES"	
19		BLANK SPE	2020	GMC	SIERRA	4X4	TRIM-RED	REFERENCE	21	4	1500	0.5	PASS_CAR	MINIVAN 4WD	10.5	15.5		TECH NOT	"WO NOTES"	
20	JOTECH61	TOO LONG	2020	GMC	SIERRA	4X4	TRIM-RED	REFERENCE	21	0.3	1500	0.5	PASS_CAR	MINIVAN 4WD	10.5	15.5		TECH NOT	"WO NOTES"	
21	JOTECH15		2020	GMC	SIERRA	4X4	TRIM-RED	REFERENCE	21	1	1500	0.5	PASS_CAR	MINIVAN 4WD	10.5	15.5		TECH NOT	"WO NOTES"	
22	JOTECH16	INVALID Y	20A	GMC	SIERRA	4X4	TRIM-RED	REFERENCE	21	1	1500	0.5	PASS_CAR	MINIVAN 4WD	10.5	15.5		TECH NOT	"WO NOTES"	
23	JOTECH17	YEAR TOO	2020000	GMC	SIERRA	4X4	TRIM-RED	REFERENCE	21	2	1500	0.5	PASS_CAR	MINIVAN 4WD	10.5	15.5		TECH NOT	"WO NOTES"	
24	JOTECH18	INVALID Y	20	GMC	SIERRA	4X4	TRIM-RED	REFERENCE	21	3	1500	0.5	PASS_CAR	MINIVAN 4WD	10.5	15.5		TECH NOT	"WO NOTES"	
25	JOTECH21	INVALID M	2020	GMC	SIERRA	C	TRIM-RED	REFERENCE	21	0.3	1500	0.5	PASS_CAR	MINIVAN 4WD	10.5	15.5		TECH NOT	"WO NOTES"	

Processing Rules:

	A	G	H	J
1	Position Title	Required	Validated	Rules/Processing
2	NUMBER	Y	N	Minimum of 1 character, no more than 13. Standard M5 Tech Spec Numbering rules apply. Missing or > 13 will result in rejection.
3	DESCRIPTION	Y	N	Minimum of 1 character, no more than 100 characters. Missing or > 100 will result in rejection.
4	YEAR	Y	Y	Must be a valid 4-digit year. Missing or invalid values will result in rejection.
5	MANUFACTURER	Y	Y	Must be a valid M5 Manufacturer. Missing or invalid values will be rejected.
6	MAKE	Y	Y	Must be a valid M5 Make. Missing or invalid values will result in rejection.
7	MODEL	Y	Y	Must be a valid M5 Model. Missing or invalid values will result in rejection.
8	TRIM	N	N	Freeform, optional. If > 20 characters, reject.
9	REFERENCE	N	N	Freeform, optional. If > 20 characters, reject.
	CATEGORY	N	Y	If System flag 5174 = Y, value is required If System Flag 5174 = W/O, value is optional. If value is populated it must exist in M5 on the CATEGORY table and must be enabled - if it does not, reject.
10				If value is populated and > 13 characters, reject.
11	REPLCT	N	N	Optional. Number with explicit floating decimal point (may auto-populate from Category/other areas, if data conflicts, use value in file)
12	GVW	N	N	Optional. 10 digit integer (may auto-populate from Category/other areas, if data conflicts, use value in file) if > 10 characters, reject.
13	OFFRDUSE	Conditional	N	Optional. Number with explicit floating decimal point, default to 0.0 if value not found on file.
14	VEHTYPE	N	Y	Optional. Must be a valid value in STATIC_CODES where CODE_TYPE = 'VEH_TYPE'
15	FUELCLASS	N	Y	Optional. Must be a valid value in STATIC_CODES where CODE_TYPE = 'FUEL_CLASS'
16	FUELCTY	Conditional	N	REQUIRED WHEN 5289 =F, REJECT IF MISSING AND (NO FUELHIGHWAY OR FUELCOMBINED VALUE)
17	FUELHIGHWAY	Conditional	N	REQUIRED WHEN 5289 =F, REJECT IF MISSING AND (NO FUELHIGHCTY OR FUELCOMBINED VALUE)
18	FUELCOMBINED	Conditional	N	REQUIRED WHEN 5289 =F, REJECT IF MISSING AND (NO FUELHIGHWAY OR FUELCTY VALUE)
19	TSNOTES	N	N	If the notes include any special characters they must be surrounded in " for proper functionality for delimited file formats only
20	TSWONOTES	N	N	If the notes include any special characters they must be surrounded in " for proper functionality for delimited file formats only
21				

Comma Delimited:

NUMBER,DESCRIPTION,YEAR,MANUFACTURER,MAKE,MODEL,TRIM,REFERENCE,CATEGORY,REPLCT,GVW,OFFRDUSE,VEHTYPE,FUELCLASS,FUELCTY,FUELHIGHWAY,FUELCOMBINED,TSNOTES,TSWONOTES

32168596A4562,Test Description - 30

characters,2015,FORD,E350,VAN,TEST,TEST,21,8,2500,0,PASS_CAR,MINIVAN 2WD,0,0,0,"""TEST NOTES""",""TEST NOTES"""

JOTECH1,"JO DESCRIPTION",2020,GMC,SIERRA,4X4,TRIM-RED,REFERENCE-

0000,21,.3,1500,.5,PASS_CAR,MINIVAN 4WD,10.5,15.5,.6,"TECH NOTES", "WO NOTES"

JOTECH2,"JO DESCRIPTION TOO LONG ",2020,GMC,SIERRA,4X4,TRIM-RED,REFERENCE-

0000,21,.3,1500,.5,PASS_CAR,MINIVAN 4WD,10.5,15.5,.6,"TECH NOTES", "WO NOTES"

JOTECH3,"TRIM TOO LONG",2020,GMC,SIERRA,4X4,TRIM11111222224444455555,REFERENCE-0000,21,.3,1500,.5,PASS_CAR,MINIVAN 4WD,10.5,15.5,.6,"TECH NOTES", "WO NOTES"
JOTECH4,"REF TOO LONG",2020,GMC,SIERRA,4X4,TRIM-RED,REFERENCE-000011112222233333,21,.3,1500,.5,PASS_CAR,MINIVAN 4WD,10.5,15.5,.6,"TECH NOTES", "WO NOTES"
JOTECH5,"INVALID CAT",2020,GMC,SIERRA,4X4,TRIM-RED,REFERENCE-0000,2X,.3,1500,.5,PASS_CAR,MINIVAN 4WD,10.5,15.5,.6,"TECH NOTES", "WO NOTES"
JOTECH6,"INVALID REPLACE PC",2020,GMC,SIERRA,4X4,TRIM-RED,REFERENCE-0000,21,.X,1500,.5,PASS_CAR,MINIVAN 4WD,10.5,15.5,.6,"TECH NOTES", "WO NOTES"

Pipe Delimited:

NUMBER|DESCRIPTION|YEAR|MANUFACTURER|MAKE|MODEL|TRIM|REFERENCE|CATEGORY|REPLPCT|GVW|OFFRDUSE|VEHTYPE|FUELCLASS|FUELCITY|FUELHIGHWAY|FUELCOMBINED|TSNOTES|TSWONOTES
32168596A4562|Test Description - 30
characters|2015|FORD|E350|VAN|TEST|TEST|21|8|2500|0|PASS_CAR|MINIVAN 2WD|0|0|0|""TEST
NOTES""|""TEST NOTES""
JOTECH1|"JO DESCRIPTION"|2020|GMC|SIERRA|4X4|TRIM-RED|REFERENCE-0000|21|.3|1500|.5|PASS_CAR|MINIVAN 4WD|10.5|15.5|.6|"TECH NOTES"| "WO NOTES"
JOTECH2|"JO DESCRIPTION TOO LONG "|2020|GMC|SIERRA|4X4|TRIM-RED|REFERENCE-0000|21|.3|1500|.5|PASS_CAR|MINIVAN 4WD|10.5|15.5|.6|"TECH NOTES"| "WO NOTES"
JOTECH3|"TRIM TOO LONG"|2020|GMC|SIERRA|4X4|TRIM11111222224444455555|REFERENCE-0000|21|.3|1500|.5|PASS_CAR|MINIVAN 4WD|10.5|15.5|.6|"TECH NOTES"| "WO NOTES"
JOTECH4|"REF TOO LONG"|2020|GMC|SIERRA|4X4|TRIM-RED|REFERENCE-000011112222233333|21|.3|1500|.5|PASS_CAR|MINIVAN 4WD|10.5|15.5|.6|"TECH NOTES"| "WO NOTES"
JOTECH5|"INVALID CAT"|2020|GMC|SIERRA|4X4|TRIM-RED|REFERENCE-0000|2X|.3|1500|.5|PASS_CAR|MINIVAN 4WD|10.5|15.5|.6|"TECH NOTES"| "WO NOTES"
JOTECH6|"INVALID REPLACE PC"|2020|GMC|SIERRA|4X4|TRIM-RED|REFERENCE-0000|21|.X|1500|.5|PASS_CAR|MINIVAN 4WD|10.5|15.5|.6|"TECH NOTES"| "WO NOTES"

Current Execution Schedule

The i-frame displays the current execution schedule for this interface. Currently and previously scheduled runs along with their ID, Description, Status, Scheduled Date, Last Run Date, Frequency, Exclude Holidays, Submitted By and Run Desc display.

Refresh

Current Execution Schedule (Loaded 1 records)

ID	Description	Status	Schedule Date	Last Run	Frequency	Exclude Holidays	Submitted By
77032	M5-STD-PART-INTF	Scheduled	04/09/2020 12:22:07		Once	N	

Schedule Details

Run Interval: Once

Exclude weekends and holidays: ☐

First execution date/time:

Schedule / Reschedule

Schedule Details

Schedule Details

Run Interval:

Exclude weekends and holidays: ☒

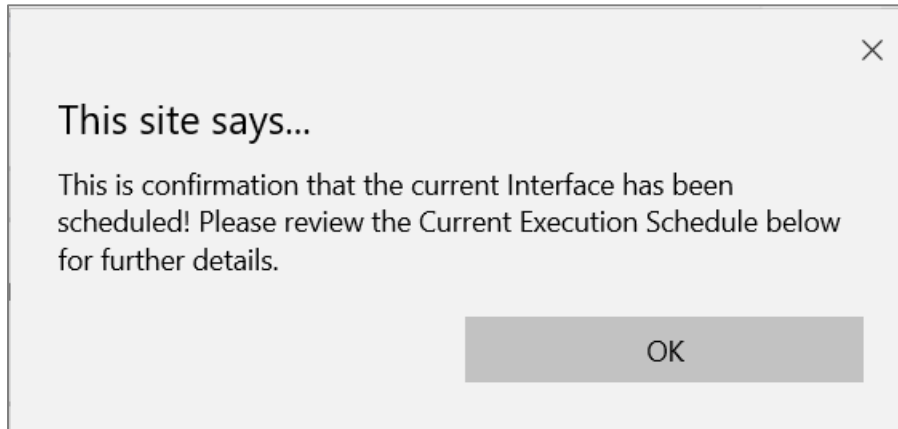
First execution date/time:

Schedule / Reschedule

To schedule the interface, enter schedule details.

- Select the run interval (Once, Minutes, Hours, Days, Months).
 - If only running once, right now, you can select **Once**, then select the **Schedule/Reschedule** button.
 - If you select Minutes, Hours, Days, or Months, enter a value for the interval in the **Run Interval** field that displays after selection is made.
- If you would like to exclude weekends and holidays from the run then select the **Exclude weekends and holidays** checkbox.
- Enter a **First Execution Date/Time** from which the run interval value should apply.
- When finished, select the **Schedule/Reschedule** button.

You will receive the following message.



The scheduled run appears on the **Current Execution** i-frame. It can also be viewed on the System Run List of Jobs frame.

To view interface rejects, refer to the Interface Reject Manager frame.

Interface Reject Manager

To view rejects for the Standard Part Upload interface, navigate to the Interface Reject Manager frame.

SAVE
UNDO
REFRESH
DELETE
FIND

Interface Reject Manager

Interface:

x 🔍

Standard Tech Spec Import

Interface Statistics (Loaded 0 records)

Stat ID	Run Date	Total Processed	Pass	Fail	Successful Reprocess	Elapsed Time In Hrs.
---------	----------	-----------------	------	------	----------------------	----------------------

To locate the interface, select the dropdown menu to select it from the list or enter to find it quicker.

SAVE
UNDO
REFRESH
DELETE
FIND

Interface Reject Manager

Interface: Standard Tech Spec Import

Interface Statistics (Record 17 of 17)

Stat ID	Run Date	Total Processed	Pass	Fail	Successful Reprocess	Elapsed Time In Hrs.
78864	07/16/2020 16:17:34	1	1	0	0	0.00
78877	07/16/2020 16:05:35	2	1	1	0	0.00
78876	07/16/2020 15:48:33	1	0	1	0	0.00
78875	07/16/2020 15:44:35	0	0	0	0	0.00

Interface Rejects (Loaded 128 records)

Resubmit	Error	Stat ID	Msg No	Spec No	Description	Category	Year	Manufacturer	Make	Model	Trim	Reference	G
<input type="checkbox"/>		78864	IF584	32168596A4562	Test Description -	21	2015	FORD	E35	VAN	TRIM-RED	TEST	2
<input type="checkbox"/>		78864	IF541	DHSPEC2	DH DESCRIPTION	21	2020	GMC	SIERRA	4X4	TRIM-RED	REFERENCE-0000	1
<input type="checkbox"/>		78864	IF541	DHSPEC3	TRIM TOO LONG	21	2020	GMC	SIERRA	4X4	TRIM1111122222	REFERENCE-0000	1
<input type="checkbox"/>		78865	IF584	DSPEC020	INVALID MAKE	21	2020	GMC	SIERRASSS	4X4	TRIM-RED	REFERENCE-0000	1
<input type="checkbox"/>		78865	IF583	DSPEC019	INVALID MFG	21	2020	GMM	SIERRA	4X4	TRIM-RED	REFERENCE-0000	1
<input type="checkbox"/>		78865	IF584	32168596A4562	Test Description -	21	2015	FORD	E35	VAN	TEST	TEST	2
<input type="checkbox"/>		78865	IF992	DSPEC03	TRIM TOO LONG	21	2020	GMC	SIERRA	4X4	TRIM1111122222	REFERENCE-0000	1
<input type="checkbox"/>		78865	IF992	DSPEC04	REF TOO LONG	21	2020	GMC	SIERRA	4X4	TRIM-RED	REFERENCE-0000	1
<input type="checkbox"/>		78865	IF549	DSPEC05	INVALID CAT	2X	2020	GMC	SIERRA	4X4	TRIM-RED	REFERENCE-0000	1
<input type="checkbox"/>		78865	IF980	DSPEC06	INVALID REPLACE	21	2020	GMC	SIERRA	4X4	TRIM-RED	REFERENCE-0000	1
<input type="checkbox"/>		78865	IF980	DSPEC07	INVALID GVW	21	2020	GMC	SIERRA	4X4	TRIM-RED	REFERENCE-0000	X
<input type="checkbox"/>		78865	IF980	DSPEC081	INVALID HWY RC	21	2020	GMC	SIERRA	4X4	TRIM-RED	REFERENCE-0000	1

After selected, the **Interface Statistics** i-frame displays.

1. Select the **Stat ID** for the run you want to view and the **Interface Rejects** i-frame displays.
 - You can scroll to the bottom and select **Show All** in the last row to view all run statistics together. However, there is a limit on the amount of data M5 can display at one time.
2. If an **Error Msg No.** is available, you can hover over it with your mouse to display the message.
 - Example: IF584 – Make does not exist for this Manufacturer.
3. After you have made the necessary corrections in M5, you can select the **Resubmit** checkbox for each record you want to resubmit.
4. You can also delete any records you do not want to correct or resubmit.
5. Select **SAVE** to reprocess the rejected records.

Updates

Release	Section	Description
23.2	All sections	Applied miscellaneous writing style updates throughout the document.